

CITROËN BERLINGO 2016 – EURO 6 FUEL SENDER PICK-UP 29.2180.01.0208

ALWAYS ENSURE THAT THE FUEL TANK IS DRAINED SUFFICIENTLY BEFORE COMMENCING, AND FOLLOW ALL RELEVANT HEALTH AND SAFETY PROCEDURES.

IF IN DOUBT REFER TO THE VEHICLE MANUFACTURES GUIDELINES

Disconnect the fuel lines and electrical connection, lower the tank and remove the fuel sender unit using a suitable removal tool, taking care not to damage the fuel level float.

Drill an 8mm diameter hole, using the dimensions shown (Figure 1).

The measurement is only a guide due to lack of a reference point, ensure that there is enough room for the washer and nut to be fastened on the underside of the sender (Figure 2).

Fit the pick-up into the sender, note the orientation as shown in (Figure 3).

Connect the supplied pre-cut length of 2mm ID blue fuel line to the pick-up, using the 3.5mm ID rubber connection hose, and fasten using the 2 x 9mm clips.

Route the fuel line down the pipe recess, which is pre-formed in the wall of the sender bucket. If the pipe is curved then point the bottom of the pipe into the recess, which will assist in keeping the fuel line straight (Figure 4).

Refit the vehicle sender, fuel lines, electrical connections and fuel tank.

**ENSURE THAT NO DEBRIS ENTERS THE FUEL TANK OR SENDER UNIT.
TO COMPLY WITH VEHICLE MANUFACTURER GUIDELINES, THIS PROCESS
MUST BE COMPLETED WITHIN 30 MINUTES.**

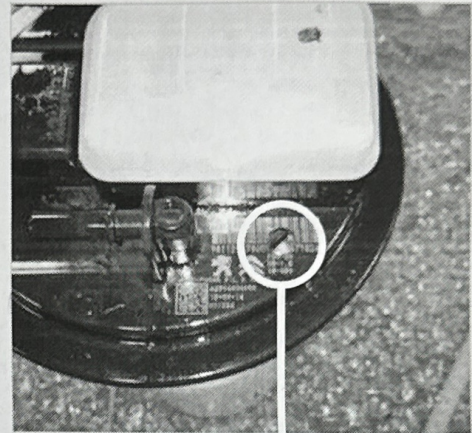


Figure 1

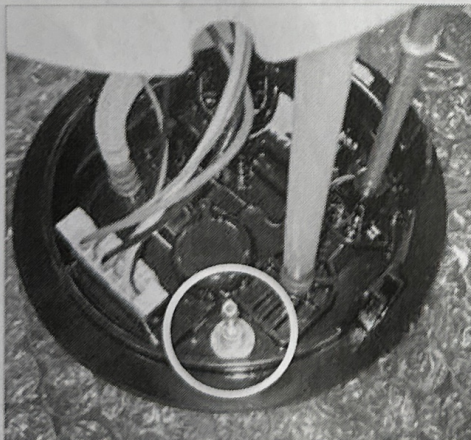
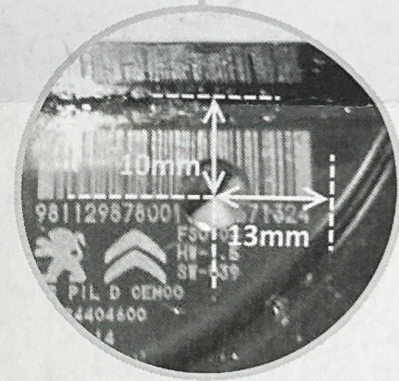


Figure 2

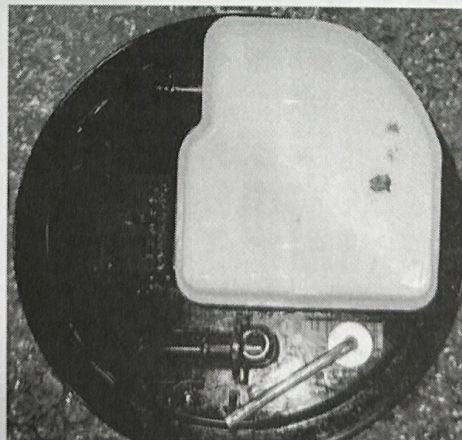


Figure 3

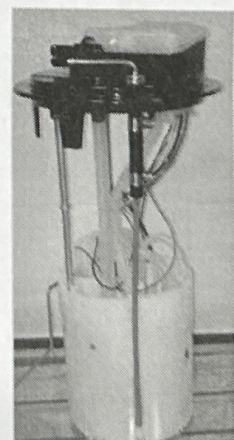


Figure 4